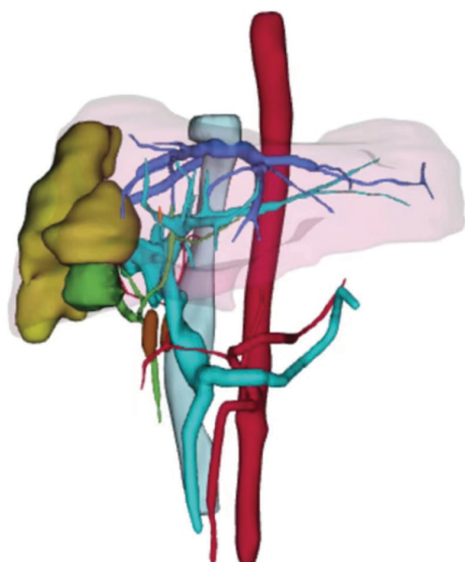


Figure S1. Remnant liver volume analysis for Case 1. The volume of the liver was calculated after three-dimensional reconstruction.



Liver regions	Volume (ml)
Whole liver	976
Left liver	530
Right liver	446
1-cm margin of safety resection	264

Volume ratio of remnant liver
(left liver)/whole liver:

$$530/976=0.54>0.4$$