

Figure S1. Forest plot of the sensitivity and specificity of HPV E6/E7 mRNA to distinguish between CIN2+ and CIN2- (before sensitivity analysis). CIN2+, cervical intraepithelial neoplasia grade 2 or worse; HPV, human papillomavirus.

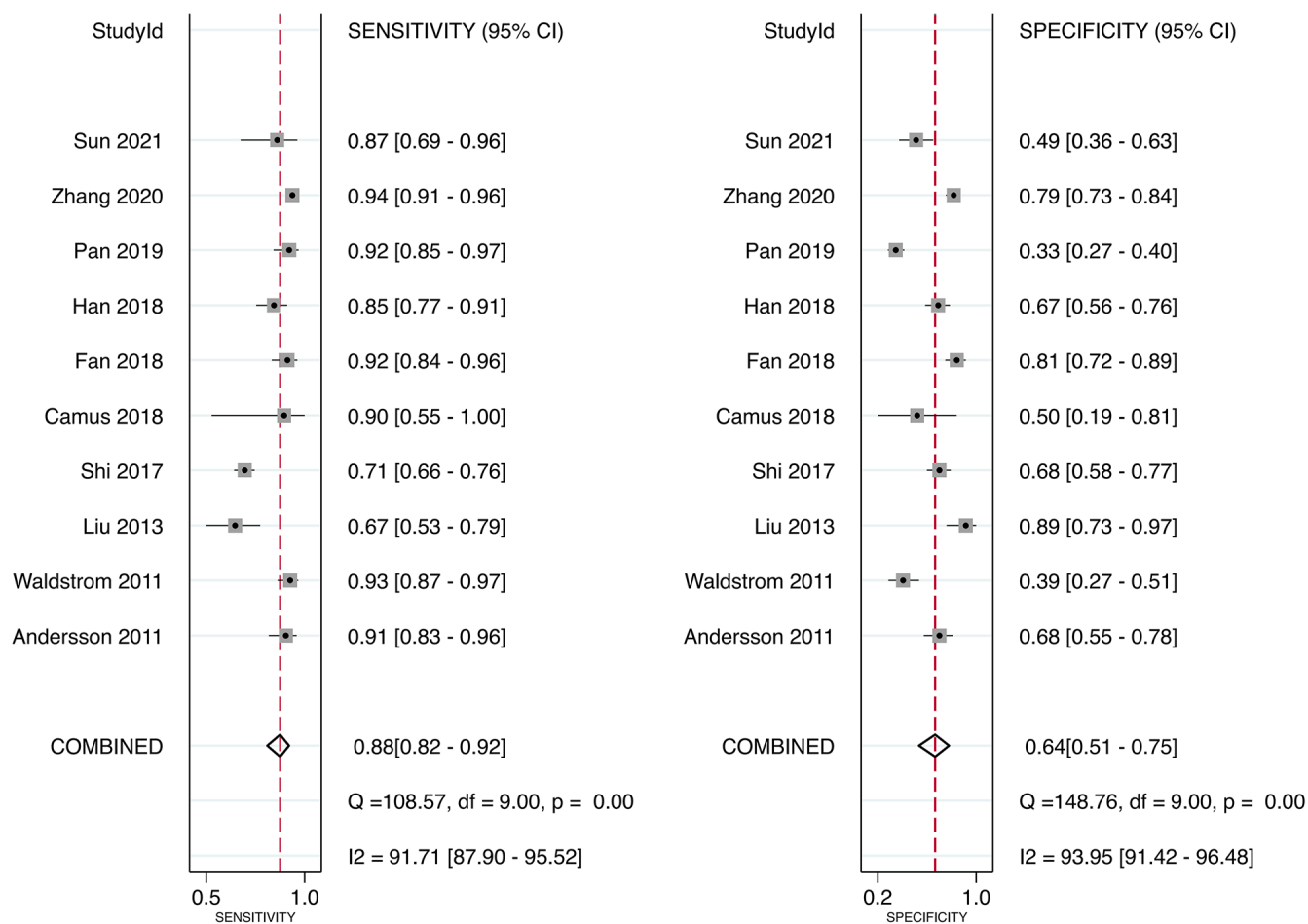


Figure S2. Forest plot of the LR+ of HPV E6/E7 mRNA to distinguish between CIN2+ and CIN2- (before sensitivity analysis). CIN2+, cervical intraepithelial neoplasia grade 2 or worse; HPV, human papillomavirus; LR+, positive likelihood ratio.

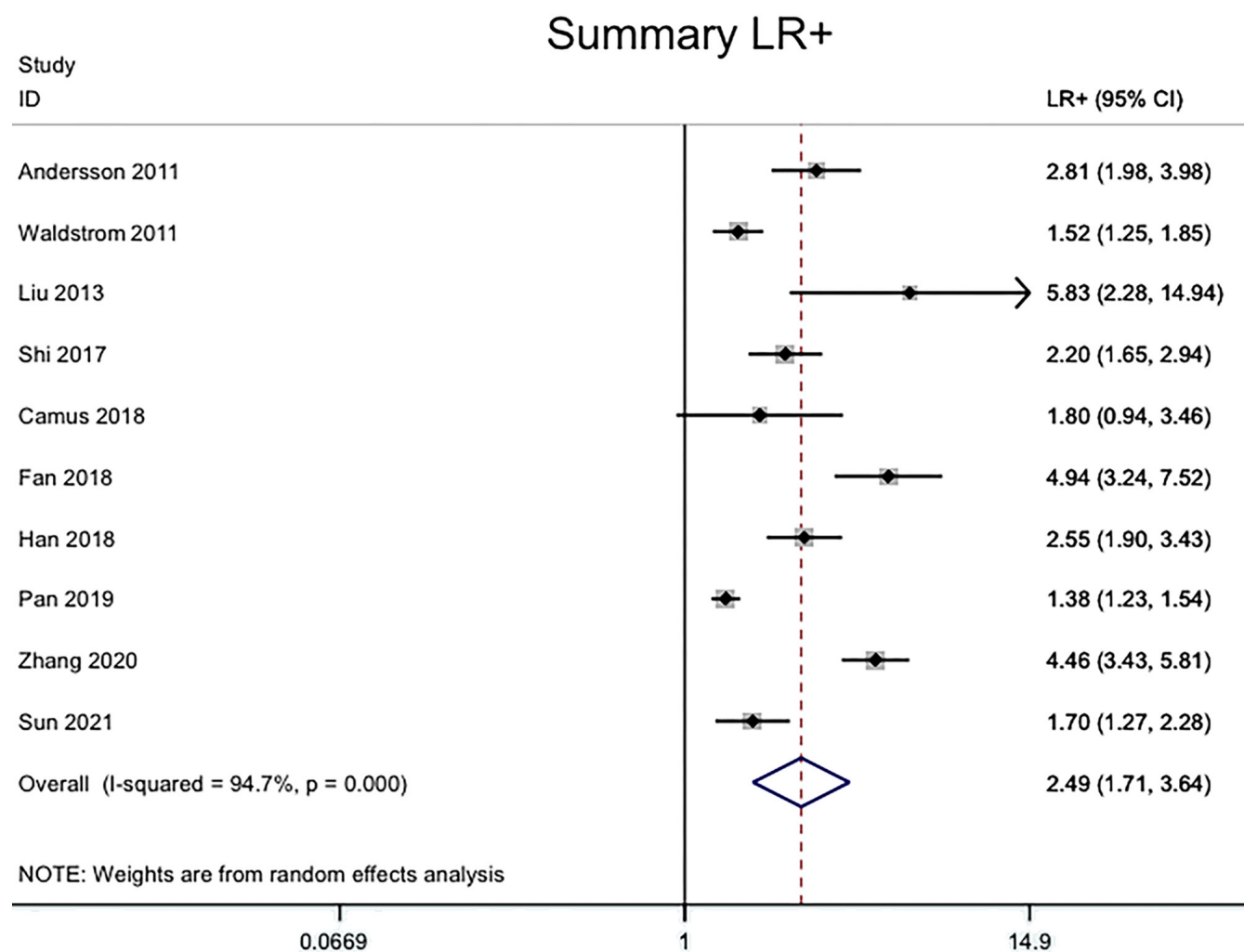


Figure S3. Forest plot of the LR- of HPV E6/E7 mRNA to distinguish between CIN2+ and CIN2- (before sensitivity analysis). CIN2+, cervical intraepithelial neoplasia grade 2 or worse; HPV, human papillomavirus; LR-, negative likelihood ratio.

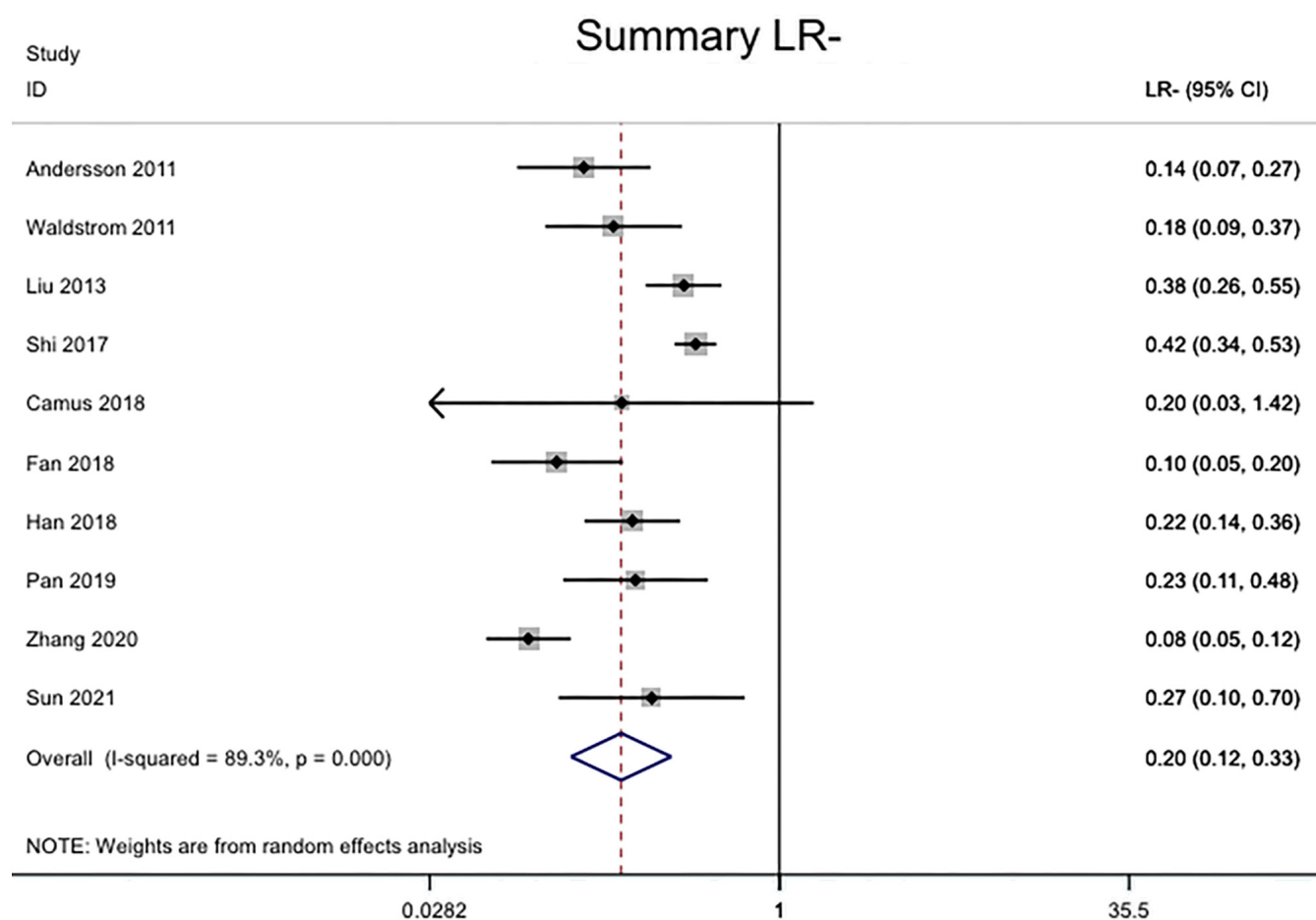


Figure S4. Forest plot of the DOR of HPV E6/E7 mRNA to distinguish between CIN2+ and CIN2- (before sensitivity analysis). CIN2+, cervical intraepithelial neoplasia grade 2 or worse; HPV, human papillomavirus; DOR, diagnostics odd ratio.

