

Figure S1. Sub-cohort of patients with DLBCL. The left panel shows the R-CHOP treatment effect groupings. The figure on the right shows the grouping of patients for follow-up. DLBCL, diffuse large B-cell lymphoma.

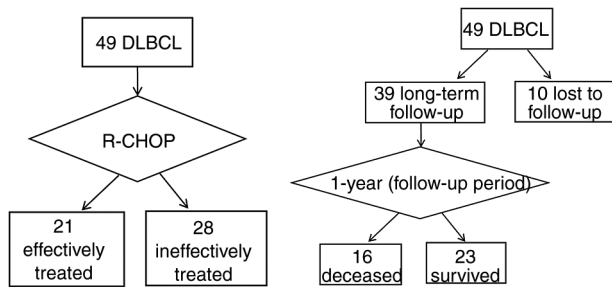


Figure S2. Expression of various cytokines (A) IL-6, (B) IL-10, (C) IFN- γ , (D) TNF- α in patients with primary DLBCL and primary CLL/SLL, and normal control volunteers. ***P<0.001. DLBCL, diffuse large B-cell lymphoma; CLL/SLL, chronic lymphocytic leukemia/small lymphocytic lymphoma; IL, interleukin; TNF- α , tumor necrosis factor- α ; IFN- γ , interferon- γ ; ns, non-significant.

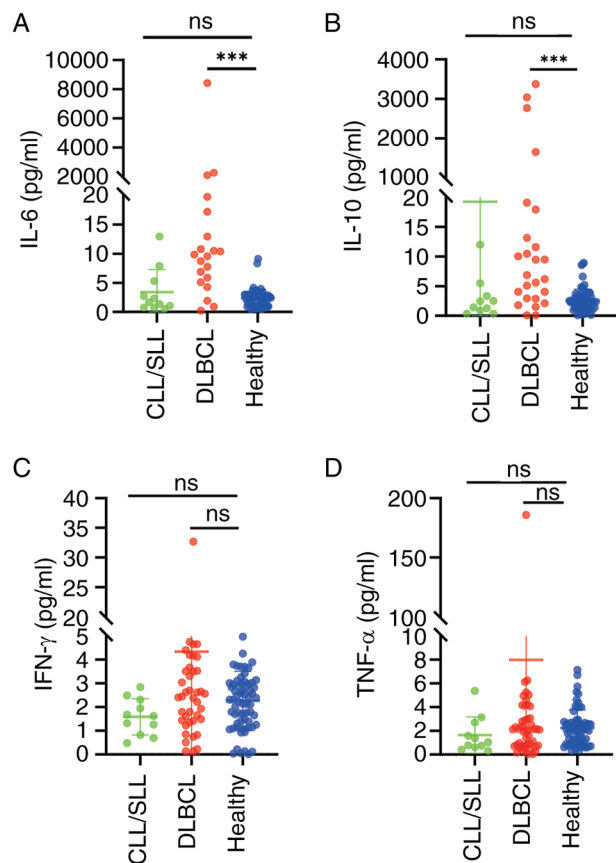


Figure S3. Flow cytometry results and the SVM model. (A) The flow cytometry plots for two representative patients. (B) Using the optimal SVM model, the prediction test group accuracy was 78.57%. FSC, forward scatter; SCC, side scatter; APC, allophycocyanin; PE, phycoerythrin; SVM, support vector machine.

